

---

# ConfigSafe<sup>®</sup> User Guide

## Version 2.0

### Documentation for:

*ConfigSafe Desktop Edition*

*ConfigSafe Network Edition Preload Client*



**imagine LAN**<sub>Inc.</sub>

the  
configuration  
experts

---

76 Northeastern Blvd. Suite 34B  
Nashua, N.H. 03062  
603-889-3883 Fax 603-889-8822  
<http://www.imagine-lan.com>

(C) 1996-1998 imagine LAN, Inc.

---

Copyright © 1996-1998 imagine LAN, Inc.

All rights reserved. Printed in the U. S. A.

No part of this document may be copied or reproduced in any form or by any means without the prior written consent of imagine LAN, Inc.

imagine LAN, Inc. makes no warranties with respect to this documentation and disclaims any implied warranties of merchant ability, quality, and fitness for any particular purpose. The information in this document is subject to change without notice. imagine LAN, Inc. reserves the right to make revisions to this publication without obligation to notify any person or entity of any such changes.

ConfigSafe is a registered trademark of imagine LAN, Inc.

MS-DOS and Microsoft are registered trademarks and Windows is a trademark of Microsoft Corporation. Novell is a registered trademark of Novell, Inc. Other product names mentioned herein are used for identification purposes only and may be trademarks of their respective companies.

---

# Contents

- CHAPTER 1: INTRODUCTION.....3**
- INTRODUCTION..... 3
- USES FOR CONFIGSAFE..... 3
- OVERVIEW..... 4
  - Profiles*..... 4
  - Snapshots*..... 4
  - Snapshot Scheduling*..... 4
  - On Demand Snapshots*..... 4
  - Manage Snapshots*..... 5
  - Restore*..... 5
  - Undo*..... 5
  - Report*..... 5
- CHAPTER 2: INSTALLATION AND SECURITY.....6**
- INSTALLATION AND SETUP..... 6
  - System Requirements*..... 6
  - Installation*..... 6
- CONFIGSAFE SECURITY REQUIREMENTS FOR WINDOWS NT..... 7
- CHAPTER 3: VIEWING CONFIGURATION CHANGES.....8**
- CONFIGSAFE ICONS..... 8
- VIEWING FILE CHANGES..... 8
  - File Changes Window*..... 9
- VIEWING SYSTEM INFORMATION CHANGES..... 11
  - System Information Window*..... 11
- VIEWING DRIVE INFORMATION CHANGES..... 12
  - Drive Information Window*..... 13
- VIEWING DIRECTORY CHANGES..... 13
  - Directory Information Window*..... 14
- VIEWING REGISTRY CHANGES..... 15
  - Registry Information Window*..... 15
- VIEWING ASSET CHANGES..... 17
  - Asset Information Window*..... 17
  - Asset Version Information Icon*..... 18
- CHAPTER 4: CREATING SYSTEM SNAPSHOTS.....20**
- CREATING SYSTEM SNAPSHOTS..... 20
  - Create System Snapshot Window*..... 20
- MANAGING SYSTEM SNAPSHOTS..... 21
  - Manage Configuration Snapshots Window*..... 21
  - Renaming a Snapshot*..... 23
  - Deleting a Snapshot*..... 24
  - Exporting a Snapshot*..... 24
  - Export Options Window*..... 25
  - Importing a Snapshot*..... 25

<i>Select Snapshot File Window</i> .....	26
<i>Setting A Password</i> .....	26
SCHEDULING AUTOMATIC SNAPSHOTS.....	26
SPECIFYING THE MAXIMUM SYSTEM SNAPSHOTS.....	27
<b>CHAPTER 5: CONFIGURATION PROFILES.....</b>	<b>28</b>
CONFIGURATION PROFILES.....	28
<i>Select Profile Window</i> .....	28
<i>Selecting a Profile</i> .....	29
<i>Renaming a Profile</i> .....	30
<i>Editing a Profile</i> .....	30
<i>Adding a Profile</i> .....	31
<i>Asset Pattern Examples</i> .....	31
<i>Deleting a Profile</i> .....	32
<b>CHAPTER 6: GENERATING REPORTS.....</b>	<b>33</b>
REPORT OPTIONS.....	33
<i>Generate Report Window</i> .....	33
PRINTING A REPORT.....	34
VIEWING A REPORT ONLINE.....	35
<b>CHAPTER 7: RESTORING SYSTEM CONFIGURATIONS.....</b>	<b>37</b>
OVERVIEW.....	37
<i>Restore Configuration Window</i> .....	38
UNDO THE CONFIGURATION RESTORATION.....	39
<i>Undo Window</i> .....	39
<b>CHAPTER 8: IMAGINE LAN, INC.....</b>	<b>41</b>
ABOUT IMAGINE LAN, INC.....	41

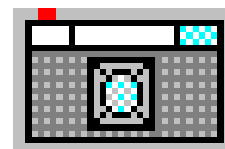
# Chapter 1: Introduction

---

## Introduction

Welcome to the ConfigSafe Users manual. This manual discusses the installation and proper use of the ConfigSafe family of products. ConfigSafe is available for Windows 95/98 and Windows NT platforms. This document will cover the general uses of ConfigSafe, and when necessary, mentioning items specific to each Windows Operating System platform.

ConfigSafe is a comprehensive configuration tracking and recovery tool for Windows PCs. ConfigSafe tracks changes users and applications make to the system Registry and configuration files, file versions (including DLLs, EXEs, and drivers), system assets, system hardware, and network connections. More importantly, ConfigSafe restores a system to a previously working configuration in just seconds.



ConfigSafe tracks changes to system settings by taking a *snapshot* of the system. The snapshot is much like a backup of the system, containing information about the Registry, configuration files, system asset files, directories, file versions, hardware, and more.

ConfigSafe uses the snapshots to:

- Identify changes users make to their configuration
- Restore the system to a working configuration

ConfigSafe lets you capture a snapshot of your system configuration at any time. You can also have ConfigSafe automatically capture a configuration snapshot at scheduled intervals. This snapshot can be used as a starting point when examining changes to the system. The snapshot can also be used to restore the system configuration to the state that it was in when the snapshot was captured.

*ConfigSafe OEM customers can find information on ConfigSafe EZ in the ConfigSafe Online Help.*

---

## Uses for ConfigSafe

Anyone running a Microsoft Windows environment can benefit from the features of ConfigSafe.

- **Tracking System Changes**

ConfigSafe tracks the changes made to a user's system. Specifically, ConfigSafe tracks changes to:

- the Registry
- system files (INI, bat)
- asset files
- directory structures
- system hardware
- network connections

- **Recovering a Working Configuration**

In just seconds ConfigSafe can restore a system to a previously working configuration.

- **Backing Up System Settings**

Before a user decides to make changes to their system they can now secure their existing settings by creating a snapshot. ConfigSafe will capture their current settings, allowing them the freedom to experiment with their system without fear that other applications will stop working, or worse, the system will not boot into Windows.

---

## Overview

ConfigSafe tracks changes to configuration information and can restore your system to a previously working configuration in seconds.

ConfigSafe tracks changes to critical information about your system's configuration using the following categories:

- File Information
- System Information
- Drive Information
- Directory Information
- Registry Information
- System Asset Information

Each information category is represented by an icon displayed on the icon bar in the upper portion of the main screen. For each category, a comparison between two Snapshots or a Snapshot and your current configuration can be viewed on the ConfigSafe main screen.

## Profiles

Profiles define the specific information (files, assets, directories, and Registry keys) tracked for your system's configuration. Default profiles are provided by ConfigSafe, however, it is recommended that the default profiles be customized to obtain the maximum product benefit. Profiles can be customized/managed by the user with the ConfigSafe Desktop Edition, by the ConfigSafe Network Manager for ConfigSafe Network Edition LAN Clients, or by the Preload Manager for ConfigSafe Preload Clients. *Note: Some LAN Clients may be able to manage their own Profiles, if this option is enabled by the ConfigSafe Network Manager.*

## Snapshots

Snapshots represent the periodic or on demand capturing of your system's configuration information (as previously defined in the Profile). This information is captured and saved for use in comparing changes over time, or to restore your system to a specific configuration that has been previously captured in a Snapshot. Snapshots are typically labeled with a description and the date and time of the capture.

## **Snapshot Scheduling**

Snapshot Scheduling can be used to automatically perform Snapshots at periodic intervals such as daily, weekly, monthly, etc. This helps to ensure that your most recent working configuration is captured in a Snapshot for use by the Restore function – if your system develops a problem.

## **On Demand Snapshots**

On Demand Snapshots can be taken by the user at any time to record the current system configuration. It is often helpful to take a Snapshot before and after making any major changes to your system. This type of Snapshot can be quite helpful if the change doesn't go well, as it enables you to quickly restore back to the configuration that was working just prior to the attempted modification.

## **Manage Snapshots**

Manage Snapshots enables you to rename, delete, export, and import snapshots. Snapshot Scheduling can also be managed with this function.

## **Restore**

Restore allows you to select a previously taken Snapshot of your system and return your system to that configuration. Use the Restore feature if your system no longer functions properly, or if you want to switch between specific configurations. Systems can also be restored from MS-DOS Mode by running SOS.exe (the SOS function is not currently available in the Windows NT environment).

## **Undo**

Undo allows you to reverse the results of a Restore process and return to the configuration in place just prior to using Restore. Undo.exe can also be run from MS-DOS Mode in a Windows 95/98 environment.

## **Report**

Report creates a comparison report of the configurations captured in two different Snapshots or a comparison report of your current configuration and a Snapshot. The report can be either printed or viewed online.

# Chapter 2: Installation and Security

---

## Installation and Setup

ConfigSafe is installed on each system to be monitored. Listed below are the requirements and installation instructions for the ConfigSafe software. ConfigSafe is easy to install, and even easier to use.

### System Requirements

#### ConfigSafe Requirements for Windows NT

- Microsoft Windows NT Operating System v3.51 or 4.0
- VGA Color Monitor
- 5 MB Disk Space

#### ConfigSafe Requirements for Windows 95/98

- Windows 95/98
- VGA Color Monitor
- 5 MB Disk Space

### Installation

**Note:** *ConfigSafe provides an Uninstall procedure when installed into a Windows 95/98 or Windows NT 4.0 environment. There is no automated Uninstall procedure when installing into a Windows NT 3.51 environment.*

1. Run INSTALL.EXE

From the ConfigSafe installation diskette run the ConfigSafe Installation Utility: INSTALL.EXE

2. Follow the On-Screen instructions.

You may be asked to specify the following information:

**Installation Directory:** Provide the name of the directory into which ConfigSafe should be installed.

**Short Cut Options:** ConfigSafe will install shortcuts on your Windows Startup menu and Desktop. If queried, select the desired installation options by marking the associated check box.

**Configuration Files:** ConfigSafe tracks the important configuration files on your system, such as WIN.INI and



SYSTEM.INI. You may be asked to verify the initial location of these files. In most cases you will want to take the defaults provided by ConfigSafe.

### 3. Installation Complete

Upon completing the installation procedure, the required files will be copied to your system, and the initial system snapshot will be taken. The initial snapshot captures your system configuration. From that point forward the system is monitored for changes. On some systems, ConfigSafe will run itself after completing the installation procedure.

---

## **ConfigSafe Security Requirements for Windows NT**

When running ConfigSafe in a Windows NT environment, the following privileges are required:

"Back up files and directories privileges"

"Managing and auditing security log"

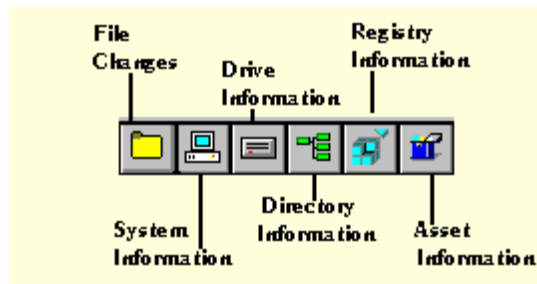
"Restore files and directories"

# Chapter 3: Viewing Configuration Changes

---

## ConfigSafe Icons

The following icons are accessible from the ConfigSafe main window. Each icon represents a major piece of system information tracked by ConfigSafe.



---

## Viewing File Changes

The File Changes window displays changes made to configuration files on your system. The information displayed represents changes made to those files between the dates specified in the Changes Starting and Changes Ending fields.

This window is the first window to display when you invoke the ConfigSafe software. You can return to this window from other ConfigSafe windows by clicking the File Changes icon in the icon section of the window.

While viewing the File Changes window, you have the following options:

Option	Description
Show Line Numbers	Show the line numbers for the file. This option is not available when viewing initialization (.INI) files.
Show Only Changed	Show only the lines that have changed.

---

## Lines

---

You specify how you want to view the information by clicking in the box next to the option desired. A checkmark in the box indicates that the option is selected.

Show Line Numbers       Show Only Changed Lines

When viewing changes in initialization (.INI) files, the information is displayed according to sections. The changes are listed by section names.

### To View File Changes:



0 Click the File Changes icon.

1 The File Changes window displays.

2 Select the file for which you want to view changes.

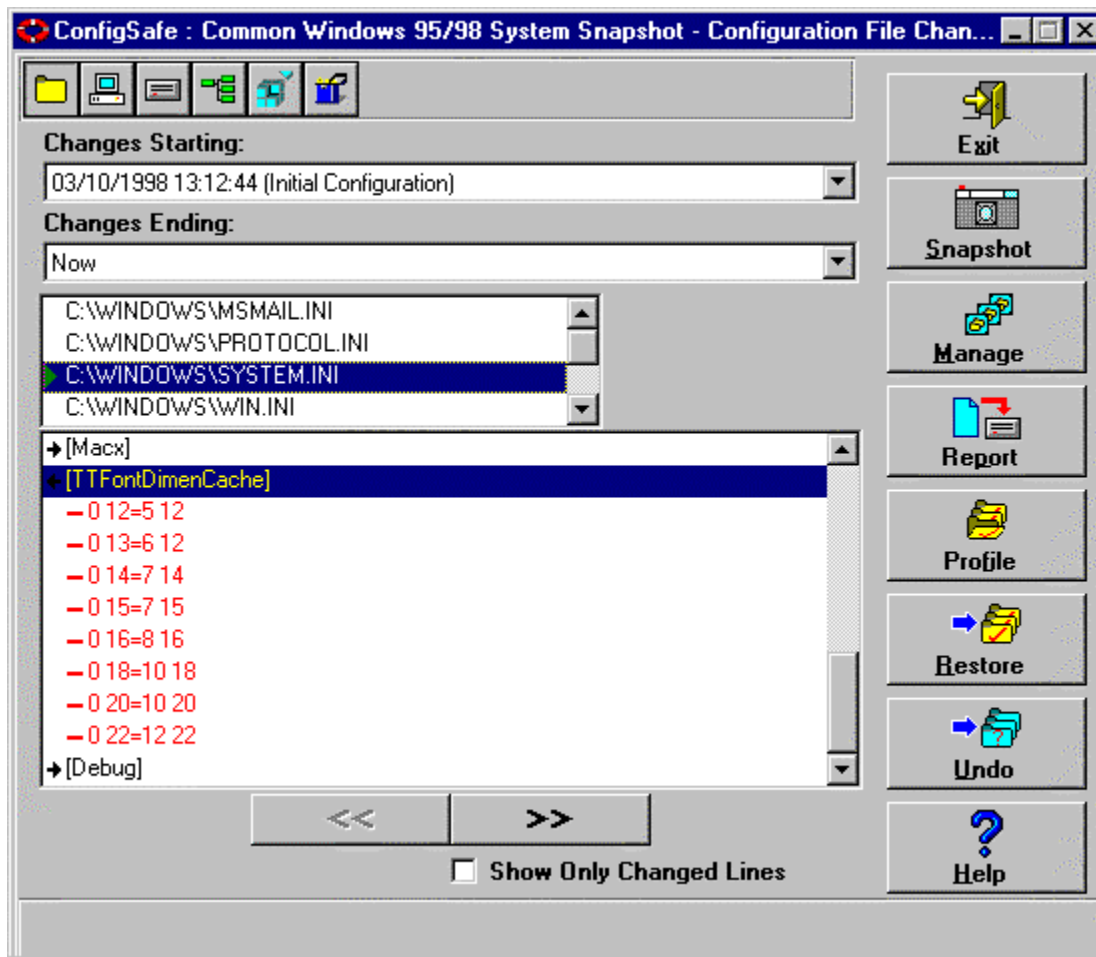
3 To view only changed lines, click in the box next to the Show only changed lines option.

4 Notice that if you double-click on the file name, NotePad is invoked displaying the contents of the file.

5 Click the Exit button when finished.

## File Changes Window

Position the cursor on a region in the window to view detailed information about that region.



## **Exit Button**

Click here to exit the ConfigSafe software.

## **Snapshot Button**

Click here to create a configuration snapshot. You can name the snapshot and select the files to be included in the snapshot.

## **Manage Button**

Click here to manage snapshot information. You can rename or delete a snapshot, schedule automatic snapshots, and specify the maximum number of snapshots you want on your system. You can also export and import snapshots from the manage snapshot window.

## **Report Button**

Click here to generate a report. You can select the information you want to be included in the report and also select whether you want to print the report or view it online.

## **Profile Button**

Click here to select a configuration profile. You can add, rename, or delete a profile as well as select the profile for current use. *Note: The Profile button is only available in the ConfigSafe Desktop Edition and in the ConfigSafe Network Edition.*

## **Restore Button**

Click here to select the configuration to be restored. You can select the files to be included in the restoration.

When restoring the configuration, you need to specify if you want to restart Windows or reboot your system once the files are restored. If you do not specify this option and proceed with the restoration, the files will be restored, but the restored configuration will not be in effect.

To protect your system from unintended or unauthorized restoration, you must enter a password to access the restore function. This password can be set and re-set from the Manage Snapshot screen by clicking on the Set Password button.

## **Undo Button**

Click here to undo an earlier configuration restoration and return the files to their original state. You can select the files to return to their original state. You select the files in the Undo window.

## **Help Button**

Provides context-sensitive online help.

## **Changes Starting**

Select the start date from the drop-down list for the monitored information.

## **Changes Ending**

Select the end date from the drop-down list for the monitored information.

## **Options**

While viewing the File Information window, you can select to view changes to the files by viewing only the lines that have changed. You specify how you want to view the information by clicking in the box next to the option desired. A checkmark in the box indicates that the option is selected.

Show Line Numbers

Show Only Changed Lines

When viewing changes in initialization (.INI) files, the information is displayed by sections. The sections that contain changes are expanded to show the changes made.

## List of Files

Displays the files that are being monitored by ConfigSafe.

## File Changes

The File Changes field identifies the actual changes made to the file. This field uses the following conventions:

Convention	Description
Red font (-)	Indicates the line was deleted. A minus sign (-) precedes deleted lines.
Blue font (+)	Indicates the line was changed. A plus sign (+) precedes changed lines.
Green font	Indicates the line was added. An arrow also precedes new lines.

## View Previous Section/View Next Section

Click on these buttons to move to the previous or next change.

---

# Viewing System Information Changes

The System Information window displays the changes made to the system within the specified time.

To View System Changes:



6 Click the System Information icon .

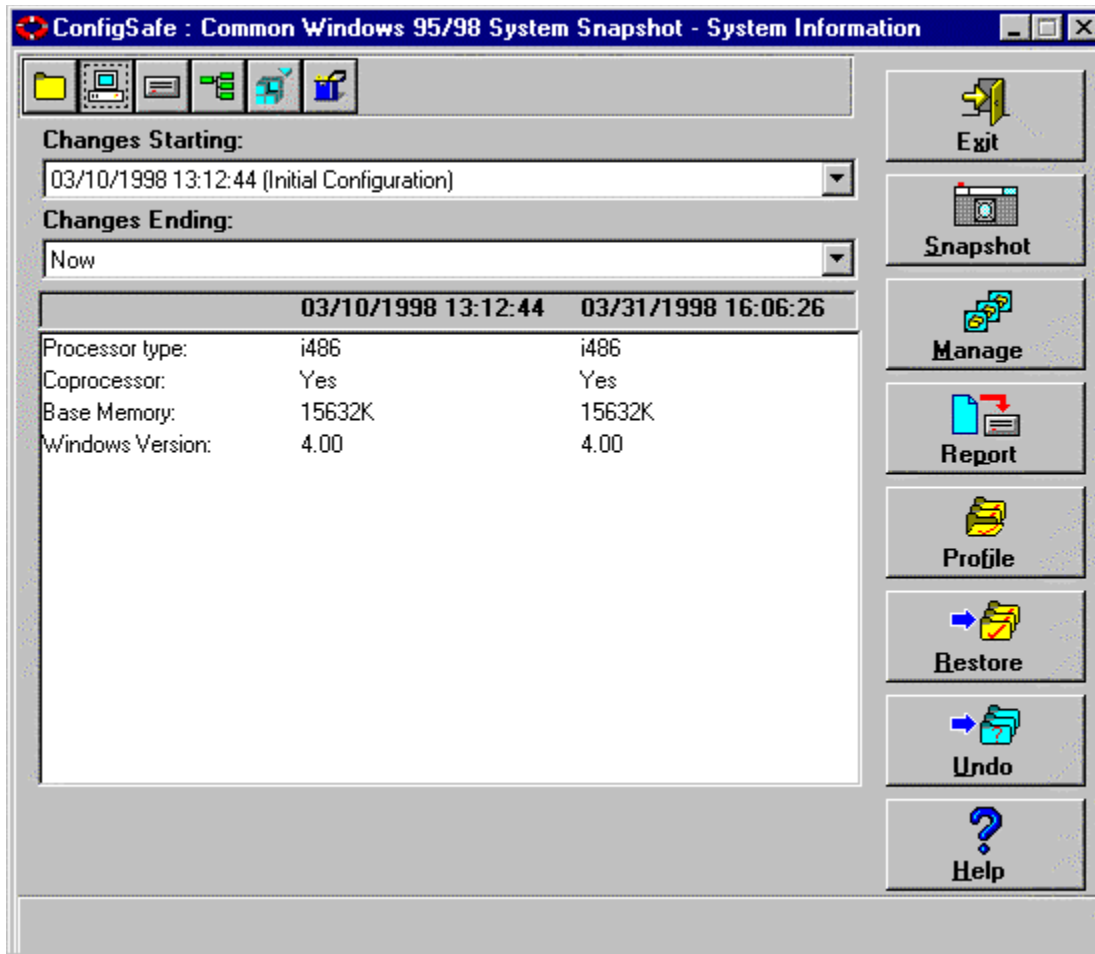
7 The System Information window displays.

8 View the changes.

9 Any changes made to the system information are displayed in green on the System Information window.

## System Information Window

Position the cursor on a region in the window to view detailed information about that region.



### ***Information Displayed - System Information Window***

Any changes made to the basic system configuration are displayed in green on the System Information window. This window lists information such as:

- Coprocessor
- Base Memory
- Windows Version
- Processor Type
- Processor Vendor

Processor type will default to the processor class (486,586,686, etc.) if the processor is a 486 or older class, or if the CPUID instruction returned a type that does not match the vendor's currently defined list of processor types.

---

## **Viewing Drive Information Changes**

The Drive Information window displays the changes made to the drive between the specified time period.

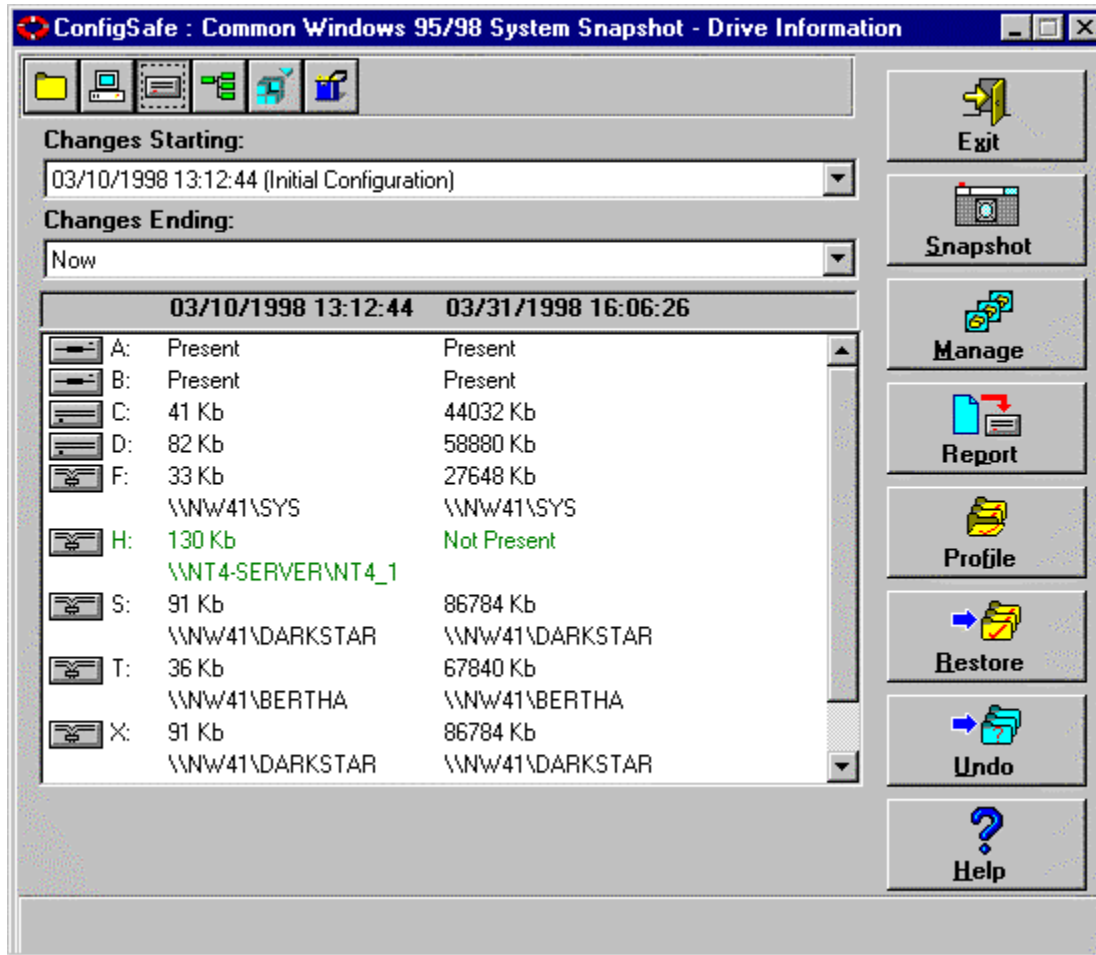
**To View Drive Information Changes:**

Click the Drive Information icon 

- 1The Drive Information window displays.
- 2View the changes.
- 3Any changes to drives are shown in green.

## Drive Information Window

Position the cursor on a region in the window to view detailed information about that region.



### Information Displayed - Drive Information Window

The Drive Information window displays the information for each drive installed on your system. Drives that are no longer configured are shown in red. New drives that have been added are shown in blue.

## Viewing Directory Changes

The Directory Information window displays the changes made to files in the directory between the specified time period.

**To View Directory Changes:**



- 10Click the Directory information icon
- 11The Directory Information window displays.
- 12Select the directory you wish to analyze.

13 ConfigSafe monitors specific directories on your system, such as the Windows and DOS directories. The list of directories monitored by ConfigSafe is listed in the upper Window of the main screen. Changes to files in those directories are listed in the Changes box, the lower window of the main screen.

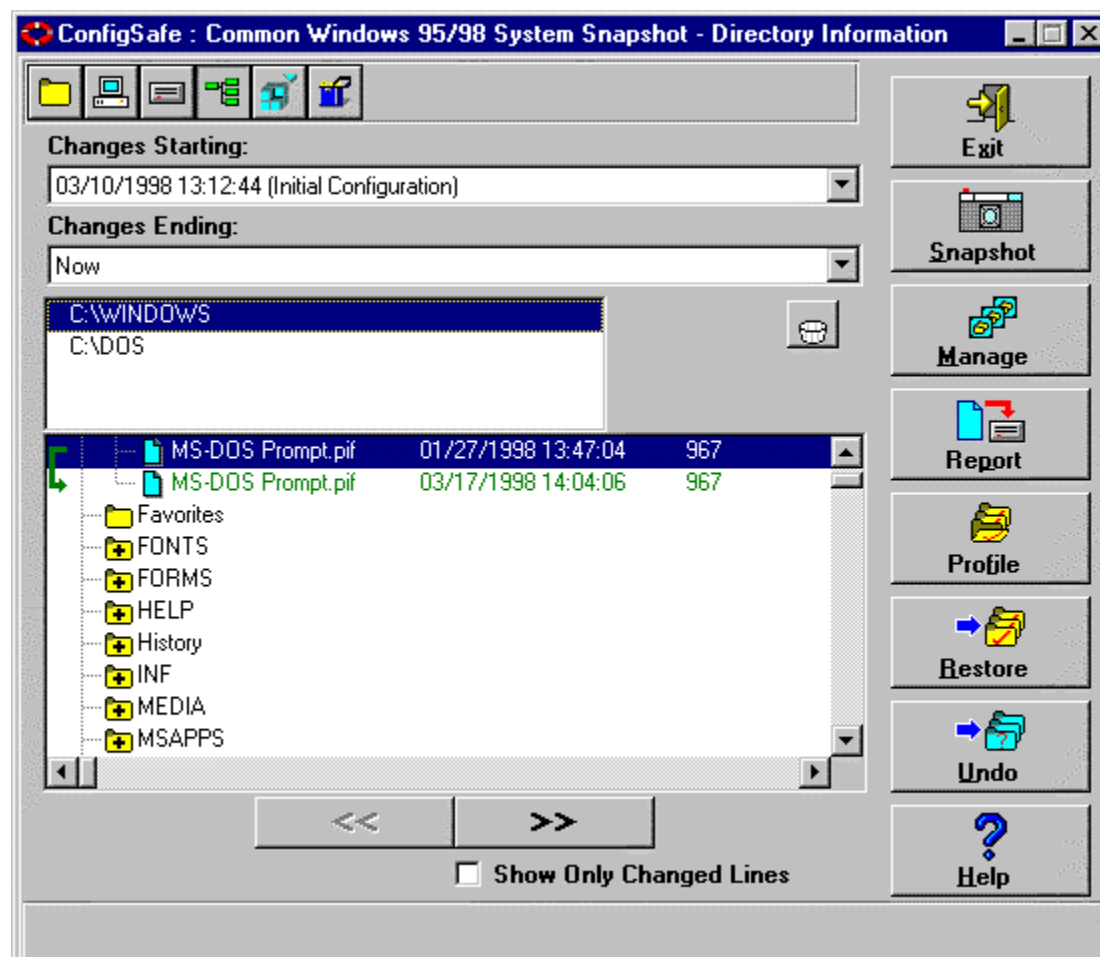
14 View the changes.

15 Any changes to files in the directories are displayed. Files that have been updated are displayed in green, files which have been added are displayed in blue, and files which have been deleted are in red.

## Directory Information Window

The Directory Information displays the information for each directory, and the files included in that directory. Double click on any directory name and the files in the directory are displayed.

Position the cursor on a region in the window to view detailed information about that region.



### List of Directories

Displays the directories that are being monitored by ConfigSafe.

### File Changes

The File Changes field identifies the actual changes made to files in the selected directory. This field uses the following conventions:



<b>Convention</b>	<b>Description</b>
Red font (-)	Indicates the file was deleted. A minus sign (-) precedes the deleted file.
Blue font (+)	Indicates the file was added. A plus sign (+) precedes new files.
Green font	Indicates the file has changed - the date, time, or size is no longer the same. A green arrow appears before the files that were changed.

### ***Changed Lines Only***

While viewing the File Changes field you have the option of having ConfigSafe show all files in a directory, or just those that have been changed. If the Changed Lines Only field is marked, only those files which have been added, deleted, or updated in the specified time period, will be displayed.

### ***View Previous Section/View Next Section***

Click on these buttons to move to the previous or next file which has been changed in the directory.

---

## **Viewing Registry Changes**

The Registry Information window displays the changes made to the Windows Registry between the specified time period. This feature helps track any changes to the system registry by Windows itself, or by an application.

### **To View Registry Changes:**



16 Click the Registry Information icon

17 The Registry Information window displays. The upper box contains a list of Registry keys that are being monitored by ConfigSafe. The lower window displays the actual changes to those registry keys.

18 Select the key you wish to analyze.

19 After you select the key you want to analyze, any changes made to registry entries in that key, or its subkeys, display in the lower window.

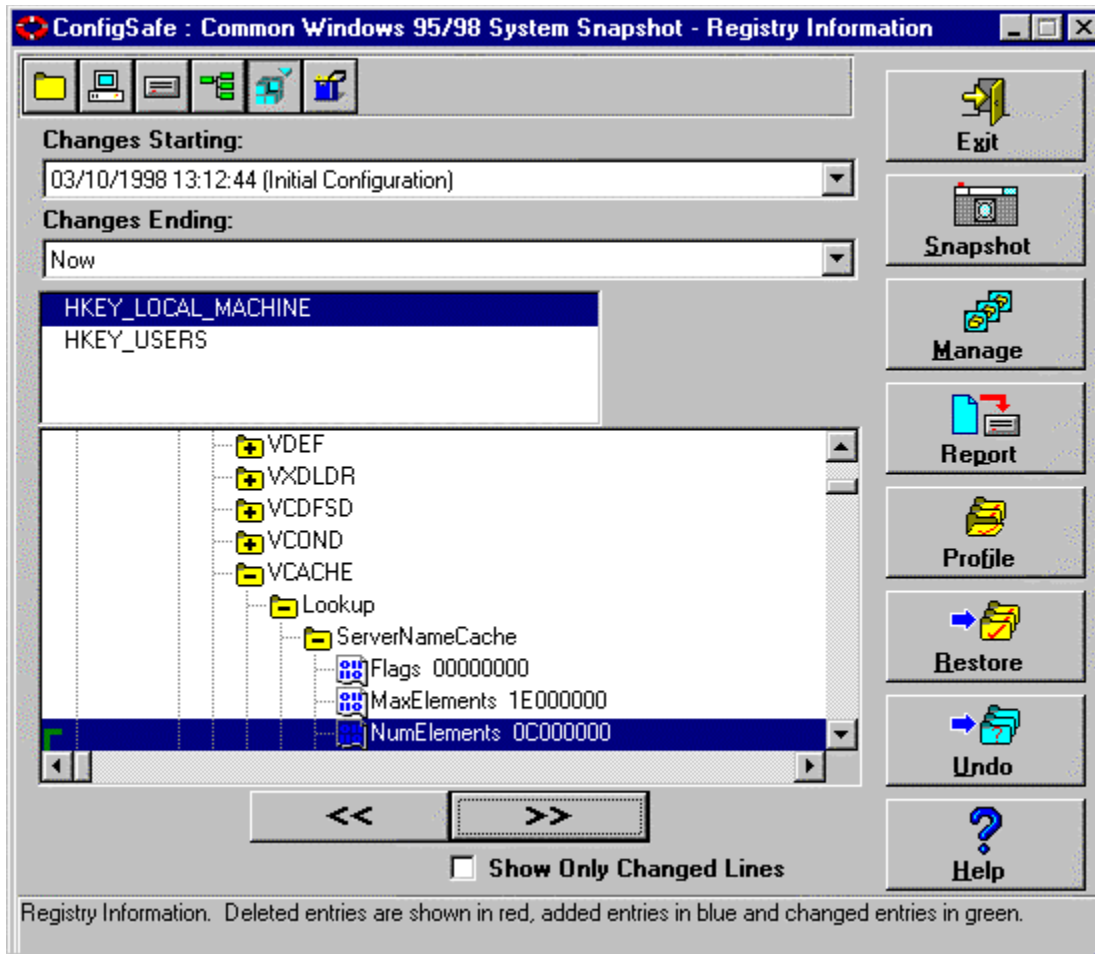
20 View the changes.

21 Any changes to registry keys or their values are displayed. Values that have been changed are displayed in green. New values and keys are displayed in blue. Deleted keys and values are displayed in red.

## **Registry Information Window**

Position the cursor on a region in the window to view detailed information about that region.

The Registry Information window has two main fields, the Registry Key List field, and the Registry Changes field. Select the key in the Registry Key List, and changes to that Registry Key, or its subkeys, are displayed in the Registry Changes field.



## Registry Key List

Displays the Registry keys that ConfigSafe monitors.

## Registry Changes

The Registry Changes field identifies the changes to the selected Registry key and its subkeys. This field uses the following conventions:

Convention	Description
Red font (-)	Indicates the Registry Key or Value was deleted. A minus sign (-) precedes the deleted registry key or value. This indicates the specified value or key is not contained in the later snapshot, but was in the earlier snapshot to which it is compared.
Blue font (+)	Indicates the Registry Key or Value was added. A plus sign (+) precedes the new entry.
Green font (green arrow)	Indicates the Registry Key or Value has changed. The old and new values for the Registry Key or Value display. A green arrow precedes the changed lines..

## Changed Lines Only

While viewing the Registry Changes field you have the option of having ConfigSafe show all the Registry keys and values, or just those that have been changed. If the Changed Lines Only field is marked, only those keys or values which have been added, deleted, or updated in the specified time period, will be displayed.

## View Previous Section/View Next Section

Click on these buttons to move to the previous or next Registry key or value which has changed.

---

# Viewing Asset Changes

The Asset Information window displays the changes made to files in the selected Asset pattern between the specified time period. Asset patterns can be specified by using a directory hierarchy or a wildcard path. This defines specific groups of files to be tracked and, if desired, archived for use if a Restore is required.

Some examples of Asset patterns are:

C:\My Documents	This Asset pattern tracks all files within the My Documents folder (and all files in its subdirectories) on the C drive.
C:\Windows\*.sys	This Asset pattern tracks all files with the .sys extension that are located in the Windows folder of the C drive.
C:\Windows\s*m\*.dll	This Asset pattern tracks all files with the .dll extension that are located in folders beginning with "s" and ending with "m", within the Windows folder of the C drive.

### To View Asset Changes:

22 Click the Asset information icon



23 The Asset Information window displays.

24 Select the Asset pattern you wish to analyze.

25 After you select the Asset pattern you want to analyze, any changes made to files in that Asset pattern display in the lower window.

26 View the changes.

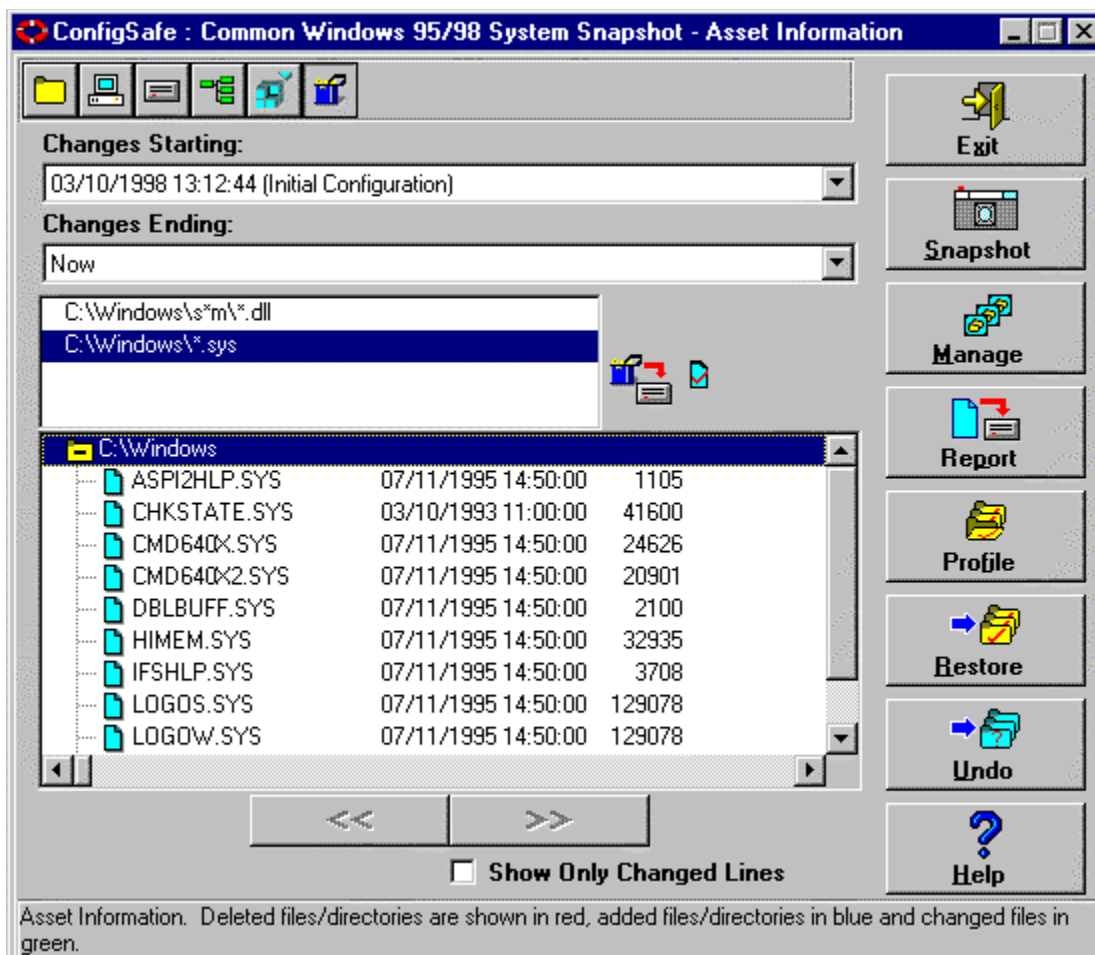
27 Any changes to files are displayed. Files that have been changed are displayed in green. New files are displayed in blue. Deleted files are displayed in red.

28

## Asset Information Window

The Asset Information window displays the information for each Asset pattern, and the files included in that Asset pattern. Double click on any Asset pattern name and the files in the Asset pattern are displayed.

Position the cursor on a region in the window to view detailed information about that region.



## Asset Pattern List

Displays the Asset patterns (by complete directory or wildcard) that ConfigSafe monitors. For example: "D:\webpage\\*.html" is an Asset pattern that will track changes to all files with the .html extension that are located in the webpage folder on the D drive.

## Archived Assets Icon



The archived assets icon displays when the selected Asset pattern has the Archive Selected Assets switch enabled.

## Asset Version Information Icon



The asset version information icon is displayed unless the selected Asset pattern has the Ignore File Version Info switch enabled. System performance during the retrieval of information from the live system can be significantly improved with the Ignore File Version Info switch enabled.

## Asset Changes

The Asset Changes field identifies the changes to the selected Asset pattern files. This field uses the following conventions:

---

<b>Convention</b>	<b>Description</b>
Red font (-)	Indicates the file was deleted. A minus sign (-) precedes the deleted file.
Blue font (+)	Indicates the file was added. A plus sign (+) precedes new files.
Green font	Indicates the file has changed - the date, time, or size is no longer the same. A green arrow appears before the files that were changed.

---

### ***Changed Lines Only***

While viewing the Asset Changes field you have the option of having ConfigSafe show all files in an Asset pattern, or just those that have been changed. If the Changed Lines Only field is marked, only those files which have been added, deleted, or updated in the specified time period, will be displayed.

### ***View Previous Section/View Next Section***

Click on these buttons to move to the previous or next file which has been changed in the Asset pattern.

# Chapter 4: Creating System Snapshots

---

## Creating System Snapshots

A system snapshot captures the configuration of your system at a specific moment. Your configuration information includes system files, and hardware configuration, file versions, network connections, directory structures, Registry information, and asset information.

You create system snapshots using the Create System Snapshot window.

### To Create a System Snapshot:

1. Click the Snapshot button.



The Create System Snapshot window displays.

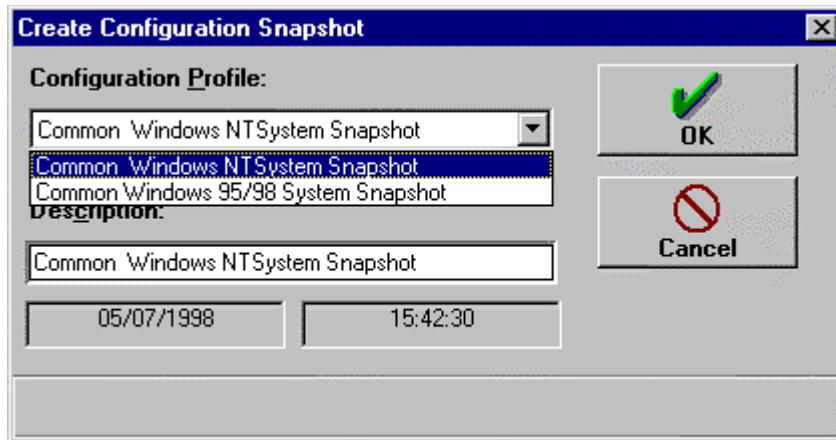
2. Enter a descriptive name for the snapshot. The snapshot includes information for the files, registry, assets, software, hardware, and network connection changes.

It is also a good idea to add a descriptive title that specifies the contents of the snapshot. For example, a descriptive title you might enter could be “Before Word for Windows Was Installed” meaning that you created the snapshot before you installed Word for Windows on your system.

3. Click the OK button to create the snapshot.

## Create System Snapshot Window

Position the cursor on a region in the window to view detailed information about that region.



### **Description Field**

Indicates the description that will be assigned to the system snapshot. When ConfigSafe snapshots your system, it keeps a record of the configuration files, system hardware, network connections, file versions, assets, and Registry information. The description field allows you to assign a descriptive name to the system snapshot, such as: “Before Installing Word for Windows.” Later, when referring to the snapshot, you will have an indication of why the system snapshot was taken.

### **OK Button**

Click here to perform the task and return to the previous window.

### **Cancel Button**

Click here to exit this window without saving any of the changes made.

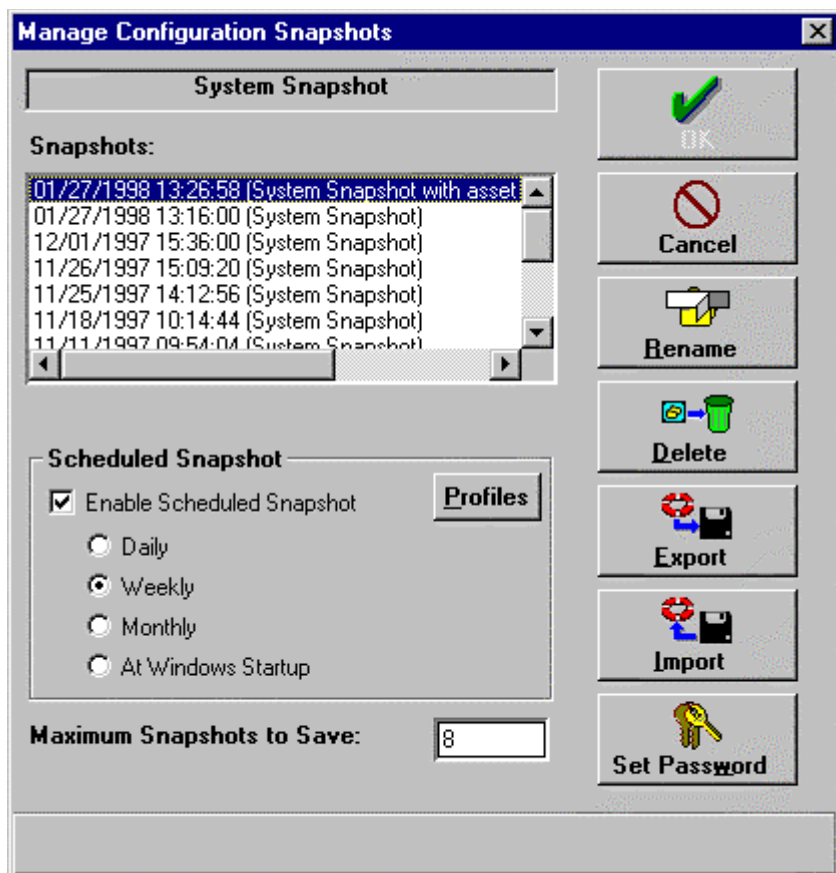
---

## **Managing System Snapshots**

Once you create the system snapshot, you may want to delete the snapshot or rename it. You can manage the system snapshots from the Manage Configuration Snapshots window.

### **Manage Configuration Snapshots Window**

Position the cursor on a region in the window to view detailed information about that region.



NOTE: Some of the fields displayed here may not be available in your version of ConfigSafe. ConfigSafe is customized by each vendor to their particular requirements — enabling and disabling certain fields. If you need the advanced features provided by these fields, you must purchase the ConfigSafe Desktop Edition or the ConfigSafe Network Edition. Contact your reseller for more information.

### ***Rename Button***

Click here to enter a different name for the selected configuration snapshot.

### ***Delete Button***

Click here to delete the selected configuration snapshot. The original system snapshot may not be deleted — it is protected by ConfigSafe.

### ***Export Button***

Click here to export the selected configuration snapshot.

### ***Import Button***

Click here to import a configuration snapshot.

### ***Set Password Button***

Click here to set or re-set a password to access the Restore function.

### ***Snapshots***



Identifies a list of system snapshots currently retained by ConfigSafe. To rename or delete a snapshot from the recorded history, first select a configuration snapshot from this list. Then, select the desired action.

Snapshots that have been imported or generated through snapshot scheduling are indicated with the following icons:



Imported Snapshot



Scheduled Snapshot

## Scheduled Snapshots

When working with snapshots, you can perform the following functions:

- Select the profile to use when creating scheduled snapshots. *Note: this function is only available in the ConfigSafe Desktop Edition and the ConfigSafe Network Edition.*
- Enable scheduled snapshots
- Schedule automatic snapshot intervals

### Profiles

You can select the configuration profile for which scheduled snapshots will be created. Note: this function is only available in the ConfigSafe Desktop Edition and the ConfigSafe Network Edition.

### Enable Scheduled Snapshots

You can schedule snapshots so that they occur automatically.

### Automatic Snapshot Intervals

You can schedule snapshots to occur at the following intervals:

Button	Description
Daily	Capture the information once a day.
Weekly	Capture the information once a week.
Monthly	Capture the information once a month.
At Windows Startup	Capture the information when Windows is invoked.

Scheduled snapshots are not dependent on system startup. The "At Windows Startup" option will take a snapshot at startup and every 24 hours thereafter, provided the user is logged onto the console.

### Maximum Snapshots to Save

In this field, you can specify the maximum snapshots to retain on your system.

For example, if you specify that you want to create a snapshot daily, and you specify that you want to retain only 7 snapshot files on your system, ConfigSafe will delete the least recent file when the 8th snapshot is taken. Again, the original system snapshot cannot be deleted, it is protected by ConfigSafe.

## Renaming a Snapshot

You can rename a snapshot should you desire to change the information in the title. For example, you could alter the title to include the date if you did not initially include that information. Or you can enter a more descriptive file name if you choose.

### To Rename a Snapshot:

1. Click the Manage button.



The Manage Configuration Snapshot window displays.

2. Click on the name of the snapshot that you want to rename.
3. Click the Rename button.

The Snapshot Description dialog box displays.

4. Enter the new name of the snapshot.
5. Click the OK button.

The Manage Configuration Snapshots window displays with the newly named snapshot.

## Deleting a Snapshot

You can delete a snapshot when the information contained within the snapshot is no longer of importance.

### To Delete a Snapshot:

1. Click the Manage button.



The Manage Configuration Snapshot window displays.

2. Click on the name of the snapshot that you want to delete.
3. Click the Delete button.
4. Confirm that this is the file you want to delete when prompted.

The Manage Configuration Snapshot window displays with the selected file deleted from the list of files.

5. Click the OK button.

## Exporting a Snapshot

You can export a snapshot when you wish to save the snapshot information outside of the ConfigSafe application.

Note: Asset archiving is not currently included in exported snapshots.

### To Export a Snapshot:

1. Click the Manage button.



The Manage Configuration Snapshot window displays.

2. Click on the name of the snapshot that you want to export.
3. Click the Export button.

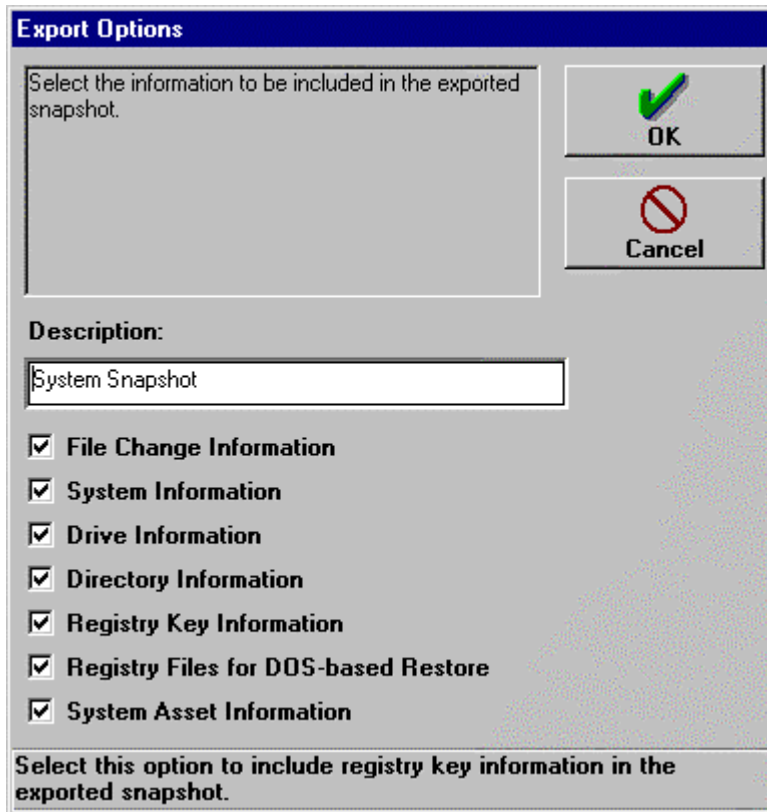


The Export Options window displays.

4. Enter a description for the exported snapshot.
5. Select the information to be included in the exported snapshot by clicking the information boxes. A checkmark indicates that the information will be included in the exported snapshot.
6. Click the OK button.  
The Save Snapshot As window displays.
7. Enter the Save In location and File Name of the exported snapshot.
8. Click the OK button.

## Export Options Window

Position the cursor on a region in the window to view detailed information about that region.



## Importing a Snapshot

You can import a snapshot when you wish to retrieve snapshot information from outside of the ConfigSafe application.

Note: Asset archiving is not currently included in imported snapshots.

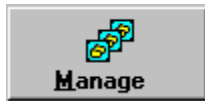
### To Import a Snapshot:

1. Click the Manage button.



The Manage Configuration Snapshot window displays.

2. Click the Import button.

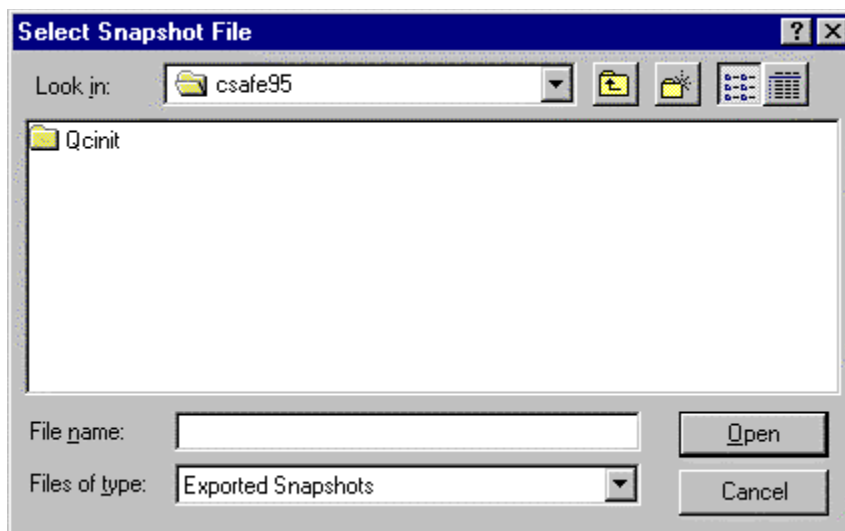


The Select Snapshot File window displays.

3. Enter the File Name of the imported snapshot.
4. Click the Open button.
5. The imported snapshot will display in the Snapshots list box.

## Select Snapshot File Window

Position the cursor on a region in the window to view detailed information about that region.



## Setting A Password

You can set or re-set a password to access the Restore function.

### To Set (or re-set) a Password:

- 29 Click the Set Password button.
- 30 Enter your old password (leave blank if none has been previously set).
- 31 Click the OK button.
- 32 Enter the new password.
- 33 Click the OK button.
- 34 Confirm the new password.
- 35 Click the OK button.

---

## Scheduling Automatic Snapshots

You can schedule snapshots so that they occur automatically.

*Note: This feature may not be enabled by your vendor. If you wish to schedule automatic snapshots, you must purchase the ConfigSafe Desktop Edition or the ConfigSafe Network Edition.*

Your choices are to capture the information:

Button	Description
Daily	Capture the information once a day.
Weekly	Capture the information once a week.
Monthly	Capture the information once a month.
At Windows Startup	Capture the information when Windows is invoked.

### To Schedule Automatic Snapshots

1. Click the Manage button from any ConfigSafe window.



The Manage Configuration Snapshot window displays.

2. Click the Profiles button. Note: this button is only available in the ConfigSafe Desktop Edition and the ConfigSafe Network Edition.

Select the profile for snapshot scheduling.

3. Click in the check box next to the Enabled Scheduled Snapshot option. A checkmark indicates that the option is enabled.
4. Select the button next to the time interval that specifies when you would like snapshots to be created.
5. Click the OK button.

---

## Specifying the Maximum System Snapshots

You can specify how many snapshot files you would like to keep on your system. ConfigSafe will delete the files once you exceed the specified number.

For example, if you specify that you want to create a snapshot daily, and you specify that you want to retain only seven snapshot files on your system, ConfigSafe will delete the least recent file when the eighth snapshot is taken.

You specify the maximum snapshots to save from the Manage Configuration Snapshots window in the following field:



Keep in mind that each system snapshot uses approximately 320Kb. You should therefore limit your snapshots by the amount of disk space you wish to provide.

### To Specify the Maximum Snapshots to Save:

1. Click the Manage button.



The Manage Configuration Snapshot window displays.

2. Enter the maximum number of snapshot files you want to keep on your system.
3. Click the OK button.

# Chapter 5: Configuration Profiles

---

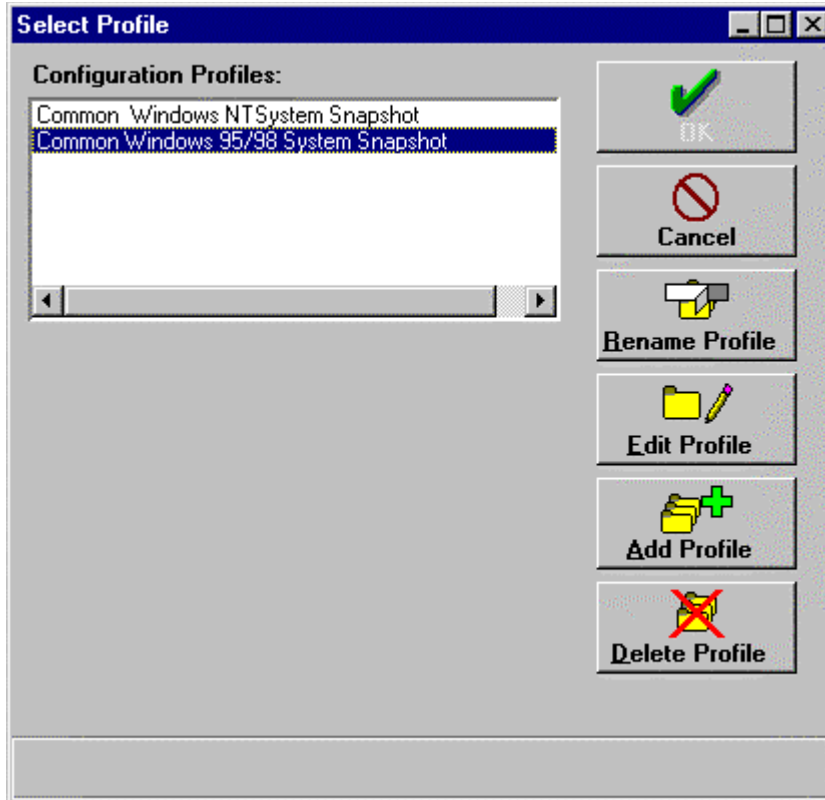
## Configuration Profiles

A configuration profile details the specific configuration files, directories, registry keys, and assets to be captured when generating a snapshot. The default configuration profile is called “system snapshot” and is generated upon installation of ConfigSafe.

ConfigSafe provides the capability to define multiple configuration profiles. A list of profiles is displayed in the Select Profile window. *Note: the ability to add, delete, and edit profiles is only available in the ConfigSafe Desktop Edition and the ConfigSafe Network Edition. The ability to edit existing profiles is available in the ConfigSafe Preload Manager.*

### Select Profile Window

Position the cursor on a region in the window to view detailed information about that region.



### **Configuration Profiles Box**

Lists the names of the profiles that have been created. Highlighted profile name indicates the profile currently in use.

### **OK Button**

Click here to perform the task and return to the previous window.

### **Cancel Button**

Click here to exit this window without saving any of the changes made.

### **Rename Profile Button**

Click here to enter a different name for the selected configuration profile.

### **Edit Profile Button**

Click here to edit an existing configuration profile.

### **Add Profile Button**

Click here to add a new configuration profile.

### **Delete Profile Button**

Click here to delete the selected configuration profile. The original system snapshot profile may not be deleted — it is protected by ConfigSafe.

## Selecting a Profile

You can select a configuration profile to be used by ConfigSafe to snapshot the system.

### To Select a Profile:

1. Click the Profile button.



The Select Profile window displays.

2. Click on the name of the profile that you want to select.
3. Click the OK button.

The ConfigSafe main screen is displayed with information for the newly selected profile.

## Renaming a Profile

You can rename a profile should you desire to change the information in the title.

### To Rename a Profile:

1. Click the Profile button.



The Select Profile window displays.

2. Click on the name of the profile that you want to rename.
3. Click the Rename Profile button.

The Modify Configuration Profile dialog box displays.

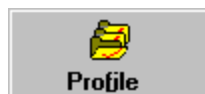
4. Enter the new name of the profile.
5. Click the OK button.

The Select Profile window displays with the newly named profile.

## Editing a Profile

You may change the attributes (configuration files, directories, registry keys, and assets) of an existing configuration profile. It is recommended that a snapshot be taken after any changes are made to a configuration profile.

### To Edit a Profile:




- 36 Click the Profile button.
- 37 The Select Profile window displays.
- 38 Click the Edit Profile button.
- 39 The Modify Configuration Profile dialog box displays.
- 40 Edit the name of the profile, if desired.

- 41 Click the File Changes icon. 


- 42 Click the Plus Sign button to add new files to the list. Click the Minus Sign button to delete files from the list.



43 Click the Directories Information icon. 


44 Existing directories are displayed in the Directories list box.

45 Click the Plus Sign button to add new directories to the list. Click the Minus Sign button to delete directories from the list.

46 Click the Registry Information icon. 

47 Existing registry keys are displayed in the Registry Keys list box.

48 Click the Plus Sign button to add new registry keys to the list. Click the Minus Sign button to delete registry keys from the list.

49 Click the Asset Information icon. 

50 Existing Asset patterns are displayed in the Asset pattern list box.

51 Click the Plus Sign button to add new Asset patterns to the list. Check the Archive Selected Assets box if archiving is desired. Check the Ignore File Version Info box if you prefer not to track version information. Click the Minus Sign button to delete Asset patterns from the list.

52 Click the OK button.

## Adding a Profile

You can add a new configuration profile should you desire to snapshot information that is different from the “system snapshot” profile.

### To Add a Profile:

53 Click the Profile button.

54  Profile

55 The Select Profile window displays.


56 Click the Add Profile button.

57 The Create Configuration Profile dialog box displays.

58 Enter the name of the new profile.


59 Click the File Changes icon. 

60 Click the Plus Sign button to add new files to the list. Click the Minus Sign button to delete files from the list.

61 Click the Directories Information icon. 

62 Default directories are displayed in the Directories list box.

63 Click the Plus Sign button to add new directories to the list. Click the Minus Sign button to delete directories from the list.

64 Click the Registry Information icon. 

65 Default registry keys are displayed in the Registry Keys list box.

66 Click the Plus Sign button to add new registry keys to the list. Click the Minus Sign button to delete registry keys from the list.

67 Click the Asset Information icon. 

68 Default Asset patterns are displayed in the Asset pattern list box.

69 Click the Plus Sign button to add new Asset patterns to the list. Check the Archive Selected Assets box if archiving is desired. Check the Ignore File Version Info box if you prefer not to track version information. Click the Minus Sign button to delete Asset patterns from the list.

70 Click the OK button.

## Asset Pattern Examples

Some examples of Asset patterns are:

C:\My Documents	This Asset pattern tracks all files within the My Documents folder (and all files in its subdirectories) on the C drive.
C:\Windows\*.sys	This Asset pattern tracks all files with the .sys extension that are located in the Windows folder of the C drive.
C:\Windows\s*m\*.dll	This Asset pattern tracks all files with the .dll extension that are located in folders beginning with "s" and ending with "m", within the Windows folder of the C drive.

71

## Deleting a Profile

You can delete a profile when the information contained within the profile is no longer of importance.

### To Delete a Profile:

1. Click the Profile button.



The Select Profile window displays.

2. Click on the name of the profile that you want to delete.
3. Click the Delete Profile button.
4. Confirm that this is the file you want to delete when prompted.

The Select Profile window displays with the selected file deleted from the list of profile.

5. Click the OK button.

# Chapter 6: Generating Reports

---

## Report Options

You can generate reports that list configuration changes from the dates specified in the Changes Starting and Changes Ending fields. You have the option of including the following information in the report:

- File change information
- System information
- Drive information
- Directory information
- Registry information
- Asset Information

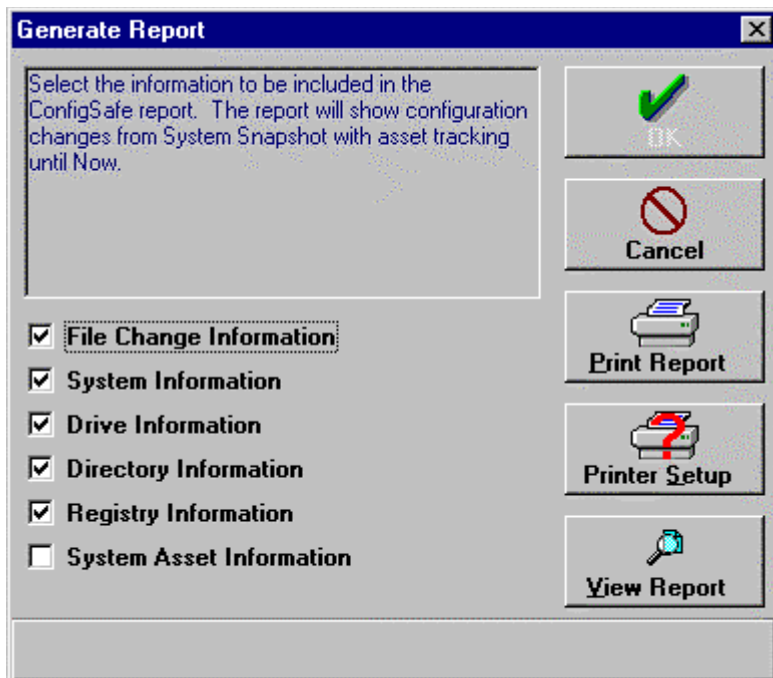
You select the information to be included in the report from the Generate Report Window.

When you create a report, you have the following options:

- Send the output to a printer
- View the report online

## Generate Report Window

Position the cursor on a region in the window to view detailed information about that region.



### ***Print Report***

Click here to print the report listing the changes to the configuration.

### ***Printer Setup***

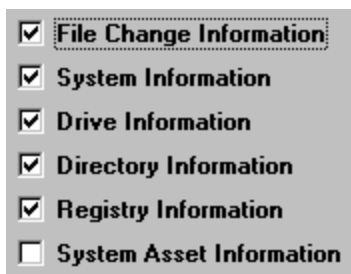
Click here to set the printing options of your printer to which you will send the report.

### ***View Report***

View the report of the changes to the configuration online.

### ***Report Information***

Click in the box next to the option to select the information to be included in the report. A checkmark in the box indicates that this information is to be included.



---

## **Printing a Report**

You can print the report once you specify the options that the report is to include.

**To Print a Report:**

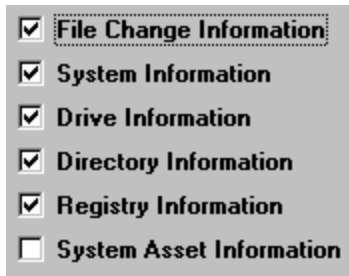
1. Click the Report button.



The Generate Report window displays.

2. Select the information that the report is to contain.

Click in the box next to the option to select the option. A checkmark in the box indicates that this information is to be included.



3. If you have not already done so, set up the printer information. If the printer information is correct, proceed to step number 4.
  - A. Click the Printer Setup button.



A standard print setup dialog box displays.

- B. Select the appropriate printing options.
  - C. Click the OK button.
4. Click the Print Report button.



The report is generated and printed on the printer specified in the printer setup information.

5. Click the OK button when finished.

---

## Viewing a Report Online

Rather than sending the output to a printer, you can view the information online. When you view a report online, Notepad is invoked and will display the report. You can then cut and paste information from Notepad or edit the report before you print it.

### To View a Report Online:

1. Click the Report button.



The Generate Report window displays.

2. Select the information that the report is to contain.

Click in the box next to the option to select the option. A checkmark in the box indicates that this information is to be included.

<input checked="" type="checkbox"/>	<b>File Change Information</b>
<input checked="" type="checkbox"/>	<b>System Information</b>
<input checked="" type="checkbox"/>	<b>Drive Information</b>
<input checked="" type="checkbox"/>	<b>Directory Information</b>
<input checked="" type="checkbox"/>	<b>Registry Information</b>
<input type="checkbox"/>	<b>System Asset Information</b>

3. Click the View Report button.



The report displays online.

4. Select Exit from the File pull-down menu when you have finished viewing the report.
5. Click the OK button.

# Chapter 7: Restoring System Configurations

---

## Overview

One of the most powerful features of ConfigSafe is the ability to restore your system to a previous configuration in just seconds. For example, perhaps you suddenly begin having problems trying to print a document. You know the system printed without a problem just last Wednesday. Now, you can restore your system to that previously working configuration in just seconds.

Simply run ConfigSafe and from the Restore Configuration window, you can select the previous configuration to be restored. If you deselect a file from the list of files, it will not be restored. Select the Restore button from any of the ConfigSafe windows. You will see the Restore Configuration window.

When restoring the configuration, you need to specify if you want to restart Windows or reboot your system once the files, archived assets, and Registry are restored. If you do not specify this option and proceed with the restoration, the files, archived assets, and Registry will be restored, but the restored configuration will not be in effect.

To protect your system from unintended or unauthorized restoration, you must enter a password to access the restore function. This password can be set and re-set from the Manage Snapshot screen by clicking on the Set Password button.

Note: If you choose to restore the Registry, the only option is to reboot your system.

### To Restore a Configuration from Windows:

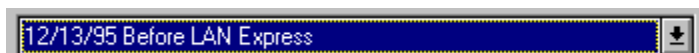
1. Click the Restore button.



Enter your password, then click the OK button.

You will see the Restore Configuration window.

2. Select the configuration to be restored from the drop-down list.



The files associated with this configuration are listed in the file list. Verify the files you wish to have restored are selected. Users should also verify the list of Registry keys selected and Assets selected if they wish to restore the total system configuration.

3. Click on the file names, Assets, and Registry keys to be included in the restoration and select the Restore button.

ConfigSafe will verify you wish to restore your system.

4. Select the action ConfigSafe should take after restoring your system.

If you want Windows to be started after the restoration, click on the Restart Windows button.



Otherwise, select the Continue button and ConfigSafe will restore your system, and then return to Windows.

Note: ConfigSafe requires that you reboot your system after restoring the system Registry.

### **To Restore a Configuration from DOS: (SOS is not available for Windows NT environments)**

1. From the CFGSAFE directory, run the SOS utility. Note: the SOS utility does not currently restore archived assets.

You will see the ConfigSafe S.O.S Utility Main Screen.

2. Select the configuration to be restored from the drop-down list.



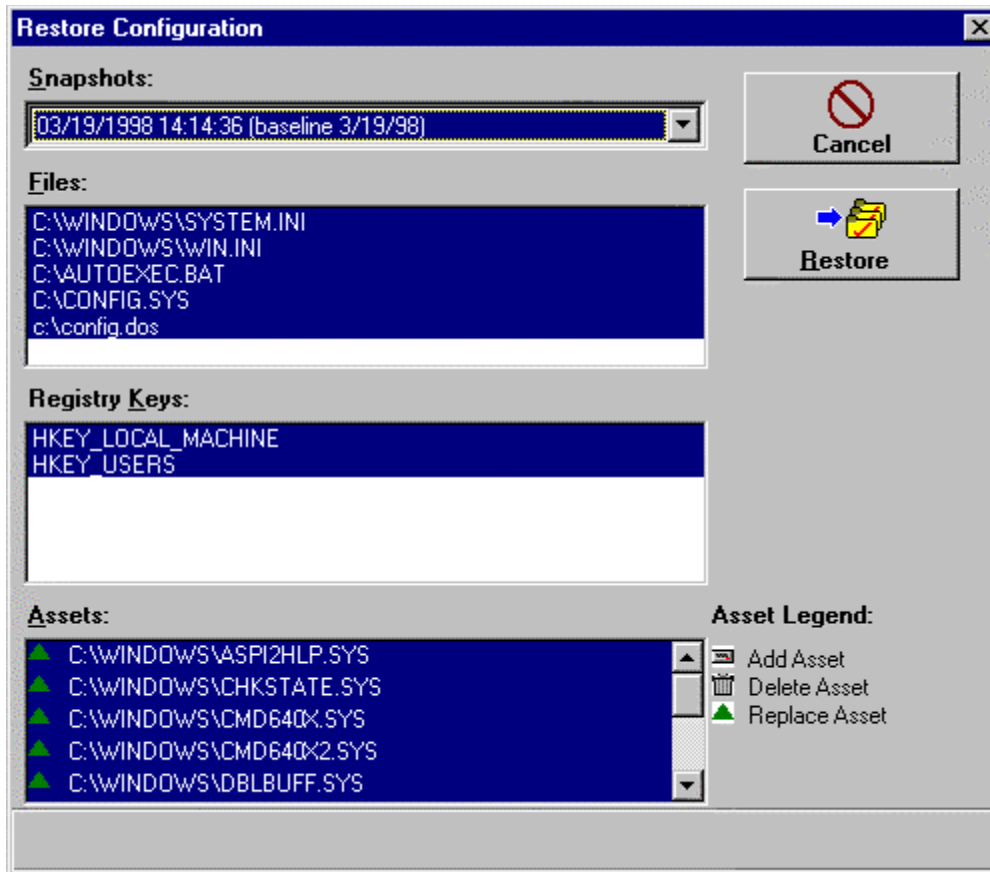
The SOS utility is specifically designed for helping you when your system won't run Windows 95/98. SOS restores all of the configuration files and registry entries of any previous configuration.

3. Select ENTER to RESTORE.
4. Upon restoring your configuration files, the ConfigSafe SOS utility will ask you to reboot your system.

## **Restore Configuration Window**

Position the cursor on a region in the window to view detailed information about that region.





## **Snapshots**

Select the snapshot to which you want your system restored.

## **List of Files**

The list of files which ConfigSafe has available for restoration. By default, all files are highlighted. Verify the files you wish to restore are highlighted, and select the restore option.

## **List of Registry Keys**

The list of Registry keys which ConfigSafe has available for restoration. By default, all keys are highlighted. Verify the keys you wish to restore are highlighted, and select the restore option.

## **List of Asset Files**

The list of archived Asset files that ConfigSafe has available for restoration. By default, all files that have changed are highlighted. Verify the archived Asset files you wish to restore are highlighted, and select the restore option.

## **Asset Legend**

The icons displayed in the Asset Legend are used to describe how the Restore process will handle each file in the List of Asset Files box. Each Asset File is preceded by one of the icons shown in the Asset Legend, which indicate that the file will be added, deleted, or replaced.

---

# Undo the Configuration Restoration

If you restore your system using ConfigSafe, and your system is no better than before, don't panic. Use the UNDO feature to return back to the system configuration that was in place before you attempted your last restore. Keep in mind, ConfigSafe can only UNDO a single level of restores.

The Undo feature allows you to undo an earlier configuration restoration and return the files to their original state. You can select the files to return to their original state. You select the files in the Undo window.

## To Undo the Configuration Restoration:

1. Click the Undo button.



You will see the Undo window.

The files, archived Assets, and Registry keys associated with this configuration are listed. The default is that all of the files, archived Assets, and Registry keys are selected.

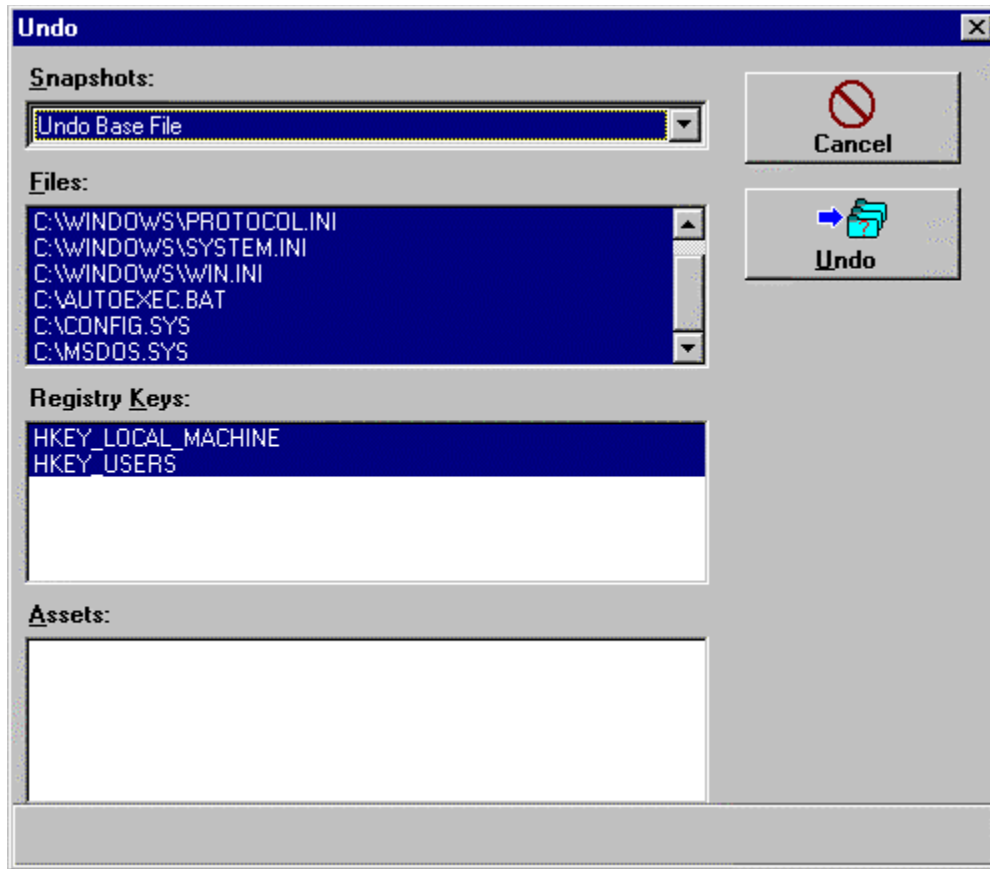
3. Click on the file names, archived Assets, or Registry keys to deselect those that you do not want to be returned to their original state.
4. If you want Windows to be started after the restore is undone, click on the Restart Windows button.



Or, click the continue button to undo the restoration.

## Undo Window

Position the cursor on a region in the window to view detailed information about that region.



**To UNDO a Configuration from DOS: (DOS UNDO is not available for Windows NT environments)**

1. From the CFGSAFE directory, run the UNDO utility.
2. You will see the ConfigSafe UNDO Utility Main Screen.
3. Select ENTER to UNDO the RESTORE.
4. Upon restoring your configuration files, the ConfigSafe UNDO utility will ask you to reboot your system.

# Chapter 8: imagine LAN, Inc.

---

## About imagine LAN, Inc.

ConfigSafe is developed by imagine LAN, Inc. Dedicated to providing support tools for today's complex multi-vendor configurations, imagine LAN, Inc. was founded in 1992. The product line includes the ConfigSafe Desktop Edition, ConfigSafe Network Edition Preload Client, ConfigSafe Network Edition LAN Client, ConfigSafe Network Edition Preload Manager, ConfigSafe Network Edition Standard Manager, and ConfigSafe Network Edition Professional Manager. ConfigSafe products are available through resellers and directly from imagine LAN, Inc.

imagine LAN, Inc. is headquartered at 76 Northeastern Blvd. Suite 34B, Nashua, N.H. 03062, and can be contacted at 1-800-372-9776 (U.S.), 603-889-3883, or [sales@imagelan.com](mailto:sales@imagelan.com). The web site is <http://www.imagine-lan.com>.

**1-800-372-9776 // 603-889-3883**

**Fax 603-889-8822**

**[www.imagine-lan.com](http://www.imagine-lan.com)**



**imagine LAN** Inc.  
the  
configuration  
experts

---

76 Northeastern Blvd. Suite 34B  
Nashua, N.H. 03062  
603-889-3883 Fax 603-889-8822  
<http://www.imagine-lan.com>